



LAUNDRY CHUTES

Wäscheabwurfschacht aus Edelstahl

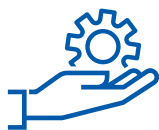
YOUR PARTNER JEREMIAS

The Jeremias Group, headquartered in Wassertrüdingen (Bavaria), is one of the world's leading manufacturers of flue systems and chimney systems in all areas of heat and power generation for industrial and residential applications.

Strong, open and international – that's how we have been presenting ourselves for almost 50 years. Worldwide production sites and sales offices represent entrepreneurial success, ambitious visions and healthy growth.

With innovative products, outstanding service and highly qualified employees, we want to inspire our customers every day and achieve the goal of sustainable joint success.

Currently, our product range includes more than 100 different CE-certified systems for private and commercial applications as well as free-standing steel chimneys with a diameter of up to four meters.



SERVICE

- Flexible production
- Special solutions tailored to customer needs
- Planning support and design-ing advice
- Chimney calculation
- Chimney sizing
- Country specific approvals
- Professional customer service
- Free software solutions



QUALITY

- More than 100 CE-certified sys-tems
- CNC laser cutting and stamping technology
- Special stainless steel alloys
- Condensate/gas tight, polished welding seams
- 25-year guarantee
- ISO 9001 certified



INNOVATION

- The largest range of products in the market
- System development with boiler, CHP and stove manufacturers
- In-house development of manu-facturing machines
- In-house test facility for stainless steel chimney systems and silenc-ers
- Computer-based simulations



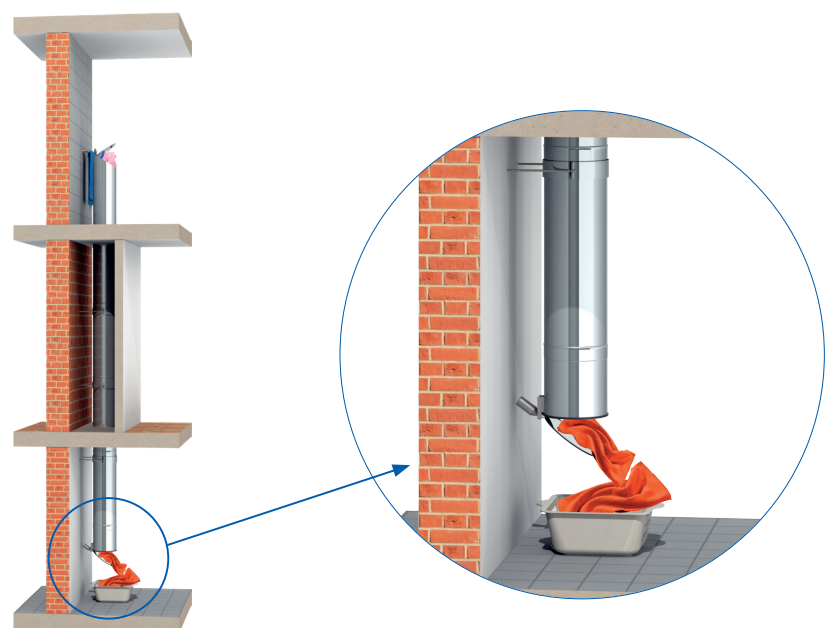
THE MOST DIRECT ROUTE TO THE WASHING MACHINE

A stainless-steel laundry chute offers many advantages as it makes it easy to get rid of dirty laundry in no time, transporting it straight to where it belongs: to the washing machine. Ideally, a laundry chute is already included in the design of the building. But even in existing buildings, e.g. unused chimneys can be converted into a laundry discharge shaft.



Whether a freestanding design terminal or an integrated entrance door in the wall, with or without entrance door in the mezzanine floor, ejector tube with cap or flanged tail pipe: Depending on the structural conditions and personal preferences, various solutions are available. A special highlight of our laundry chutes product range is the ejector tube with cap.

Once adjusted precisely, the screwable counterweight ensures that the lid opens reliably even with minimal laundry weight and closes automatically once the laundry has been discharged.

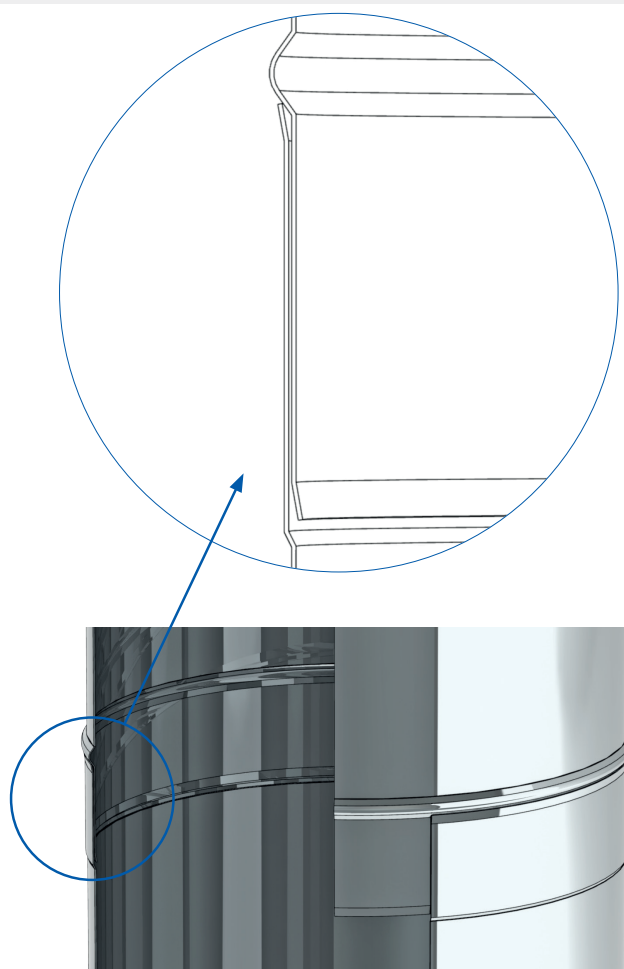




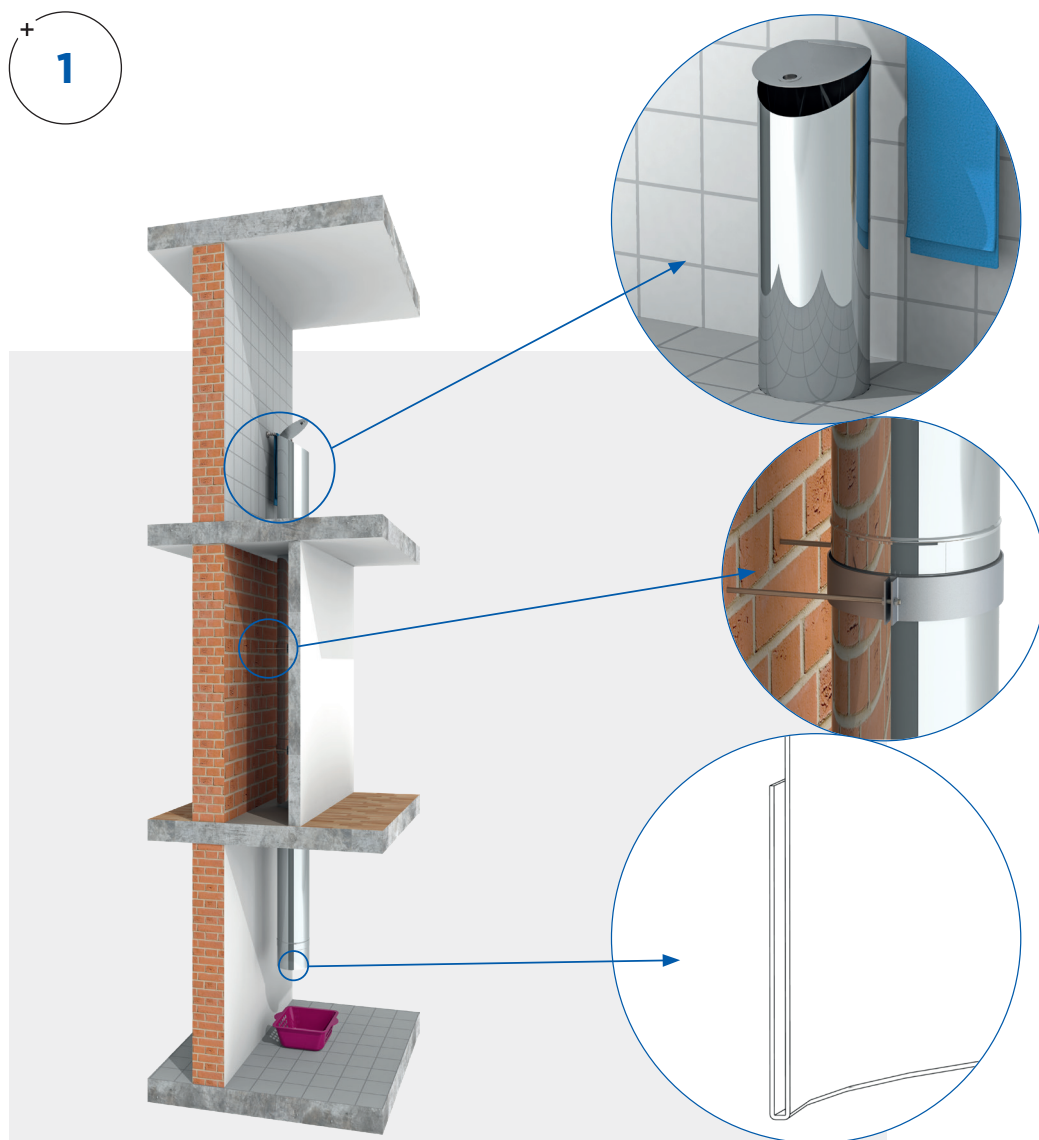
CHARACTERISTICS

TECHNICAL DETAILS

- Sophisticated, well thought out plug-in system for easy installation
- Made in Germany
- 25 years warranty
- Stainless steel 1.4301 (304) in high gloss
- Visible elements on request available in brushed or painted surface
- Available on the surface
- No static charge (compared to plastic systems)
- Plug-in direction prevents sharp-edged transitions in the pipe, where laundry may get caught or damaged
- Optional automatic flap or flanged ejection pipes available
- Available in three diameters (250, 285 and 300mm)
- Entry doors have noiseless locking mechanism
- Child safety through lockable entry doors: WA1936, 1937, 1950 and 1951
- Design terminals as a visual highlight



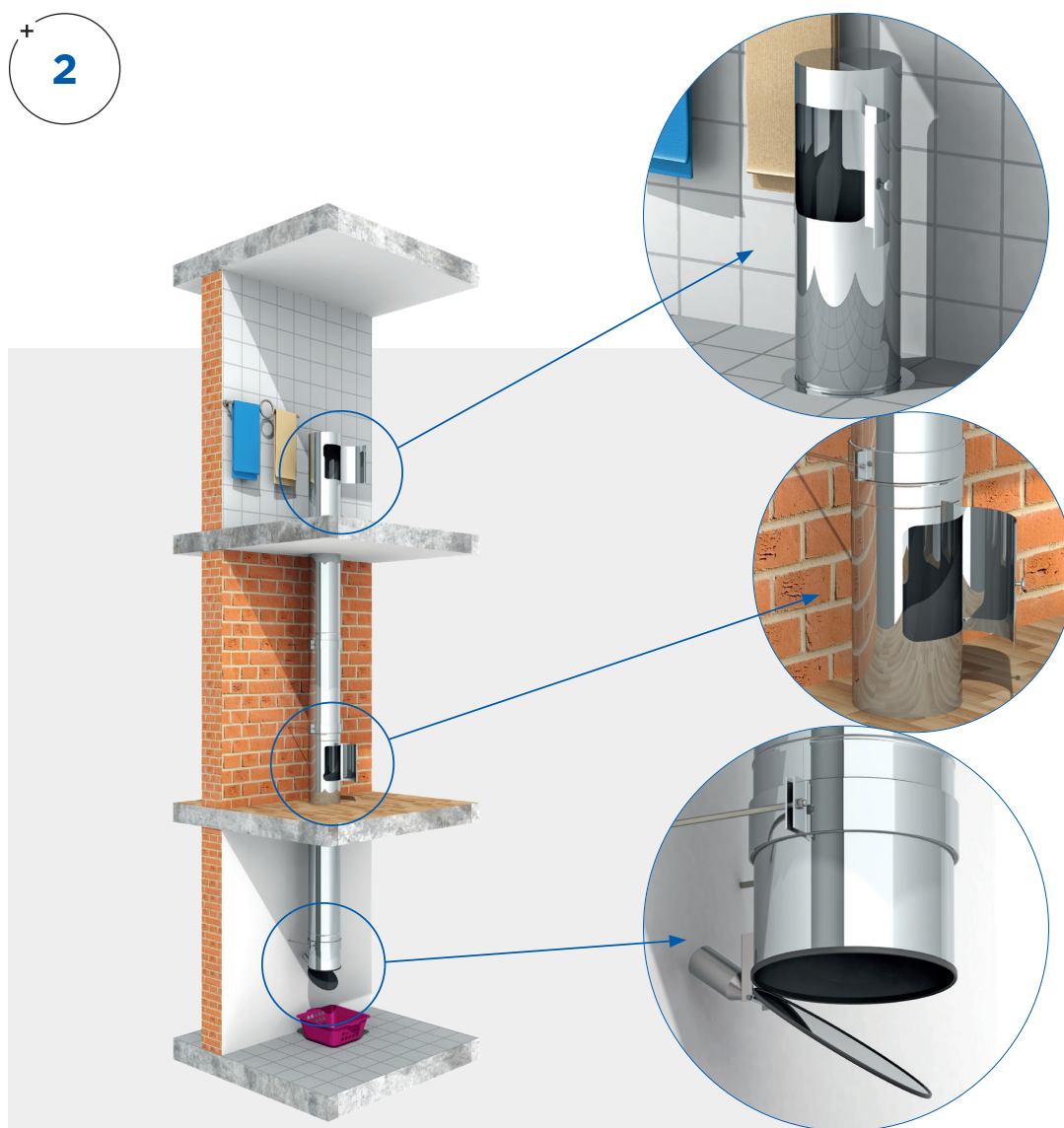
SELECTED INSTALLATION MODELS



MODEL 1:

Laundry chute with top loader WA33 terminal intake door on the top floor and flared discharge pipe WA06518 as end piece in the cellar.

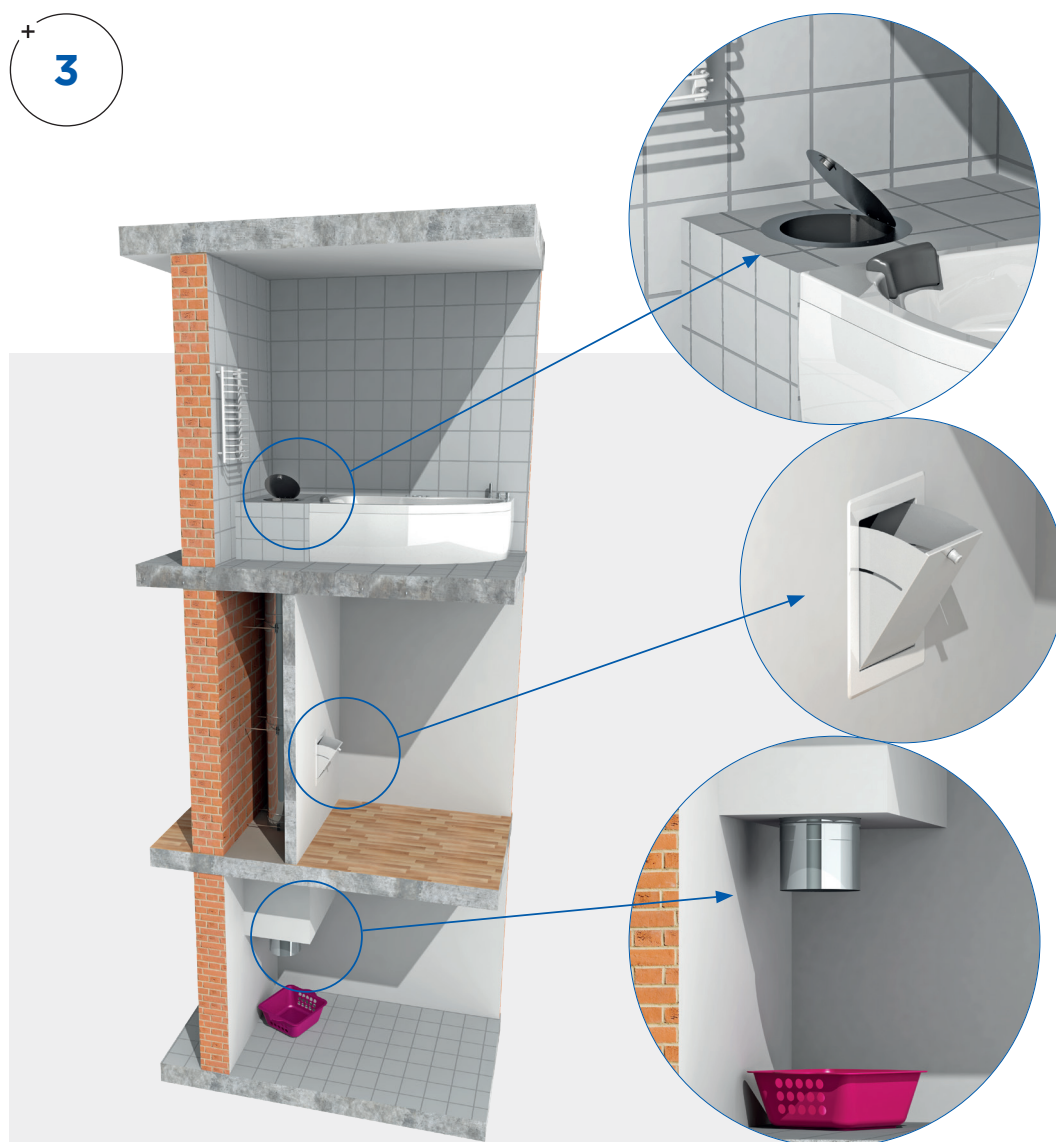
⁺
2



MODEL 2:

Laundry shaft with design intake terminal door WA06428 on the top floor, intermediate intake door WA06429 on the ground floor and one discharge pipe with self-closing cover WA730 in the basement.

SELECTED INSTALLATION MODELS



MODEL 3:

Laundry chute with round intake door WA418 on the top floor, lockable intermediate insert WA1950 on the ground floor and a flanged discharge pipe WA06518 in the basement.

SYSTEM LAUNDRY CHUTE

ADVANTAGES:

- Simple and comfortable handling
- No more smelly laundry in bathrooms, rooms and staircases
- No need any more to carry full dirty laundry baskets through the house
- Laundry lands directly in laundry basket near the washing machine
- Feed door prevent drafts and heat loss in the rooms

APPLICATION AREA:

- Easy to install in new buildings
- Also possible to use in existing buildings, e.g. in not used chimney
- Suitable for single family homes as well as commercial use (hospital, hotels, retirement homes, ..)

The fire protection requirements must be clarified by the customer.





Pricelist

LAUNDRY CHUTES

Feed terminal with shell-type handle, height 980 mm



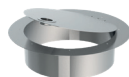
WA330

Feed terminal with Design door, height 980 mm



WA4280

Feed door round with shelltype handle for horizontal installation



WA4180

Feed door 340 x 450 mm with door lock, painted white, hinges on side



WA1936

Feed door 340 x 450 mm with door lock, hinges on side



WA1937

Feed door 340 x 450 mm with door lock, painted white, hinges at bottom



WA1950

Feed door 340 x 450 mm with door lock, hinges at bottom



WA1951

Feed pipe with Design door, Length 980 mm



WA064290

Feed pipe with box for feed doors WÄ 1936, 1937, 1950 and 1951



WA06070

Discharge pipe with beaded end, Length 240 mm



WA065180

Discharge pipe with beaded end, Length 95 mm



WA062960

Discharge pipe with self-closing lid, Length 323 mm



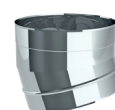
WA7300

Self-closing lid



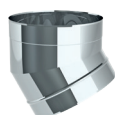
WA19500

Elbow 15°



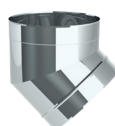
WA160

Elbow 30°



WA170

Elbow 45°



WA180

Closing lid/cap with handle



WA110

Floor cover ring



WA910

Locking band



WA410

Adaptor to KG-Pipe Length 1000mm



WA062970



WA06130

Length 500mm	Length 330mm	Length 150mm	Wall support sound-decoupled	Support locking band with arms for ceilings	Bracket for inter- mediate ceiling	Bracket 90° for ins- tallation at corners
						
WA0614Ø	WA06207Ø	WA406224Ø	WA385Ø	WA10Ø	WA492Ø	WA589Ø

Wall bracket	Wall bracket including threaded rod M10	Laundry bag 45 l	Laundry bag 95 l
			
WA493Ø	WA61Ø	WA1992Ø	WA1992Ø

GERMANY

Jeremias Abgastechnik GmbH
Opfenrieder Str. 12
D-91717 Wassertrüdingen
Phone: +49 9832 6868-50
Mail: welcome@jeremias-group.com
www.jeremias-group.com

POLAND

www.jeremias.pl

USA

www.jeremiasinc.com

SPAIN

www.jeremias.com.es

RUSSIA

www.jeremias.ru

SWITZERLAND

www.jeremias-schweiz.ch

CZECH REPUBLIC

www.jeremias.cz

CROATIA

www.jeremias.hr

FRANCE

www.jeremias-france.fr

ITALY

www.jeremias.it

FINLAND

www.jeremias.fi

UNITED KINGDOM

www.jeremias.uk

Austria | Belarus | Belgium | Brazil | Bulgaria | China (Hongkong) | Denmark | Estonia | Greece | Hungary | Ireland | Kazakhstan | Latvia | Liechtenstein | Lithuania | Luxembourg | Malta | Mexico | Moldova | Netherlands | Norway | Portugal | Romania | Saudi Arabia | Serbia | Singapore | Slovakia | Slovenia | South Africa | Sweden | Tunisia | Ukraine | United Arab Emirates

Jeremias high quality products to be installed only by selected experts.

The expert in your area: