

JEREMIAS SMOKE AND GAS EXHAUST SOLUTIONS
FOR THE FOOD INDUSTRY

INDUSTRIAL BAKERIES



FOOD INDUSTRY

EXHAUST SOLUTIONS FOR SMOKE;
STEAM AND VAPORS IN INDUSTRIAL
BAKERY INSTALLATIONS



PLANNING STAGE

DIFFERENT NECESITIES

Exhaust systems for industrial bakery ovens have special demands.

Usually no project is the same. It is important to include the various wishes of the customer (baker) in the planning stage.

Therefore, detailed and professional advice (concept and solution and development) is essential for the customer.

In Jeremias we have a highly professional team specialised in sector-specific smoke and gas exhaust installations.



PLANNING STAGE

DIFFERENT TYPES OF INSTALLATIONS

Projects are developed on the basis of various needs, criteria and specifications

Single and/or twin wall insulated flue gas ducts are used for the discharge of flue gas, steam and vapours and the intake of fresh air.

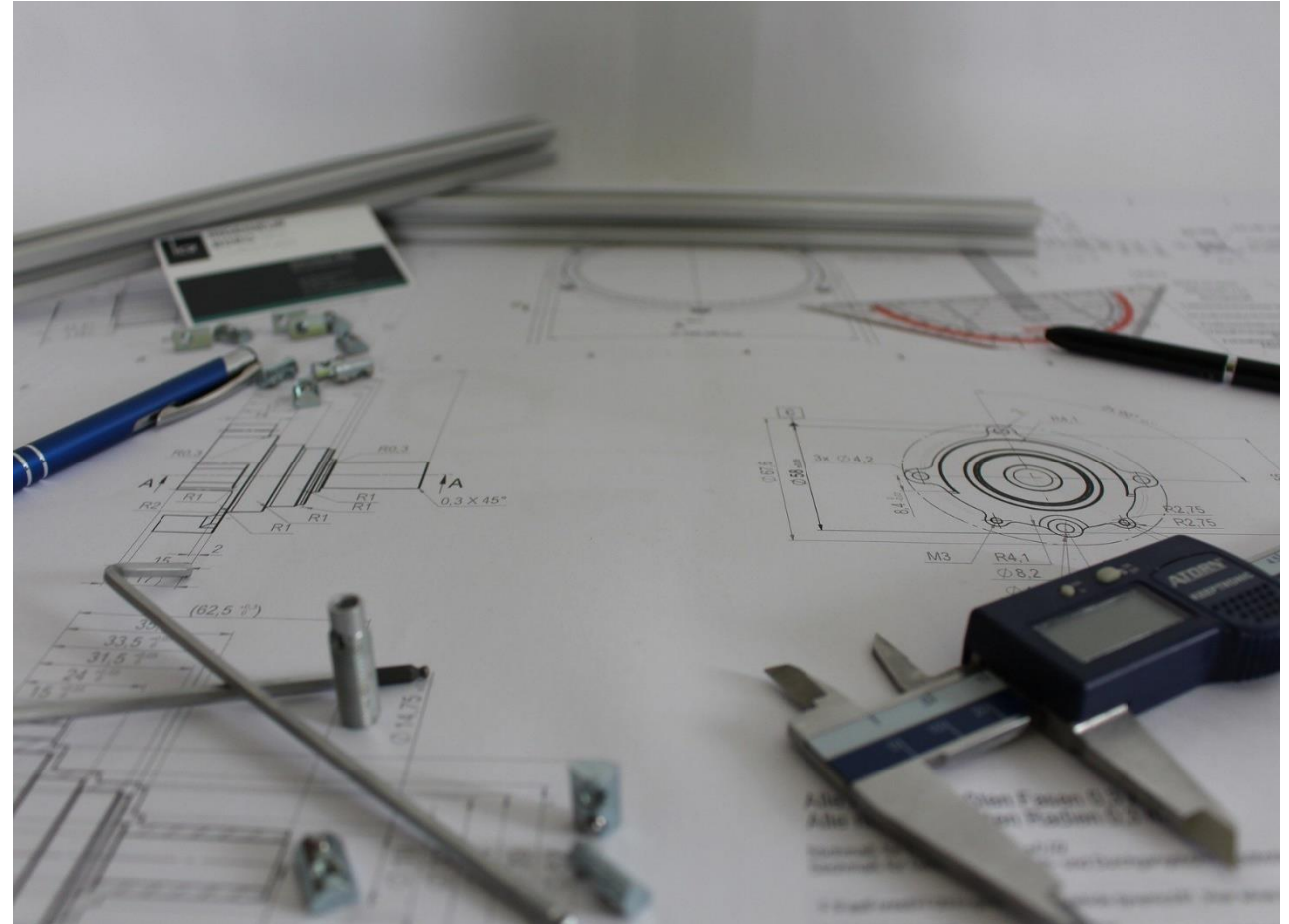
- 1) **Individual ducting** in single and/or twin wall insulated are used for the discharge of combustion gases, steam and vapors and the intake of fresh air,
- 2) **Communal ducting** that allow a heat recovery system to be integrated for greater efficiency (cost effectiveness) and environmental protection



PLANNING STAGE

DIFFERENT TECHNICAL RESOURCES

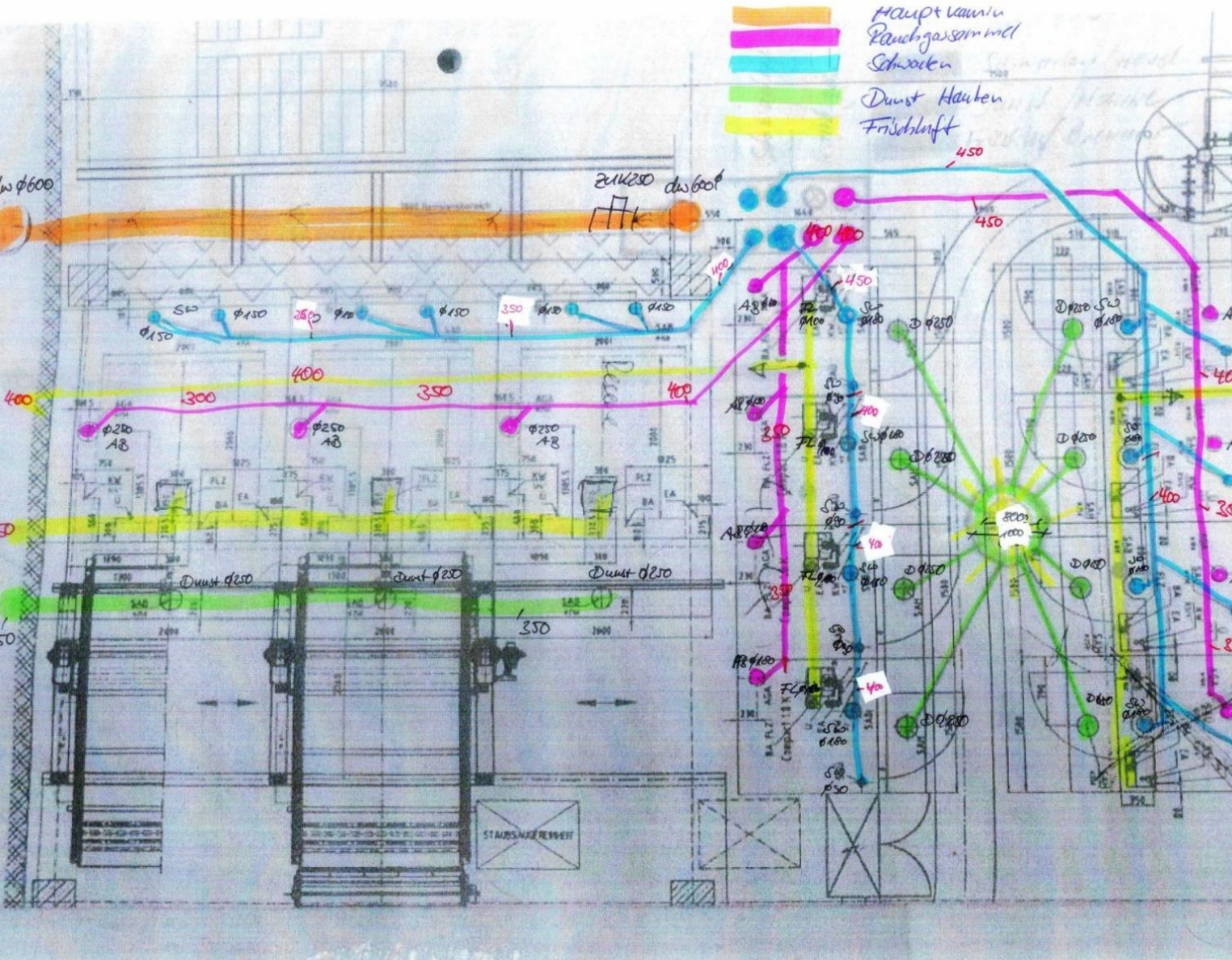
- Sizing calculation for optimal diameter
- Fire Resistance Consulting
- Custom designed silencers
- Support for design and technical development
- Static calculations for stacks (freestanding)
- Multilingual specialist technical advice
- Professional customer service
- Manufacturer's warranty



TYPE OF EXHAUST

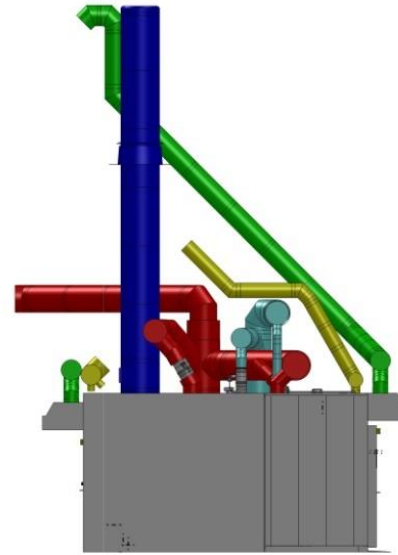
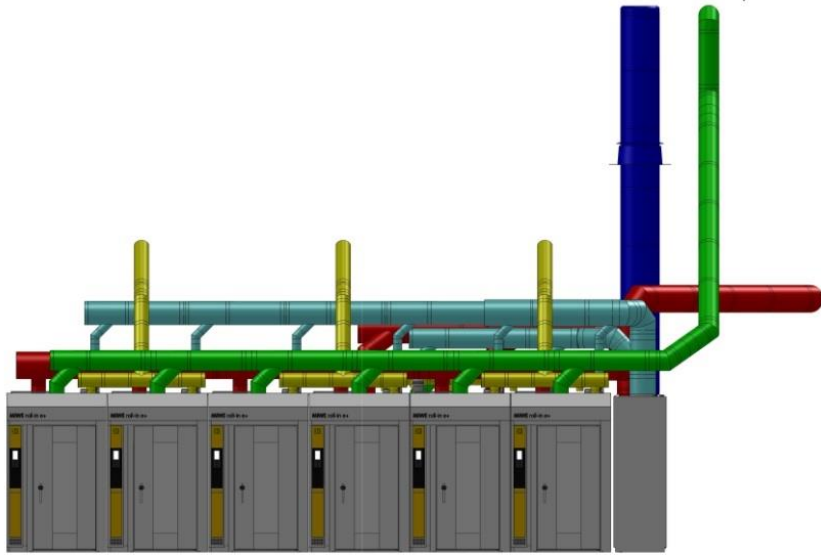
- Vapor
- Steam
- Smoke



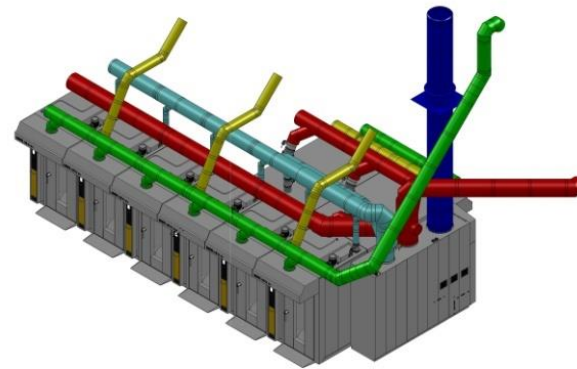
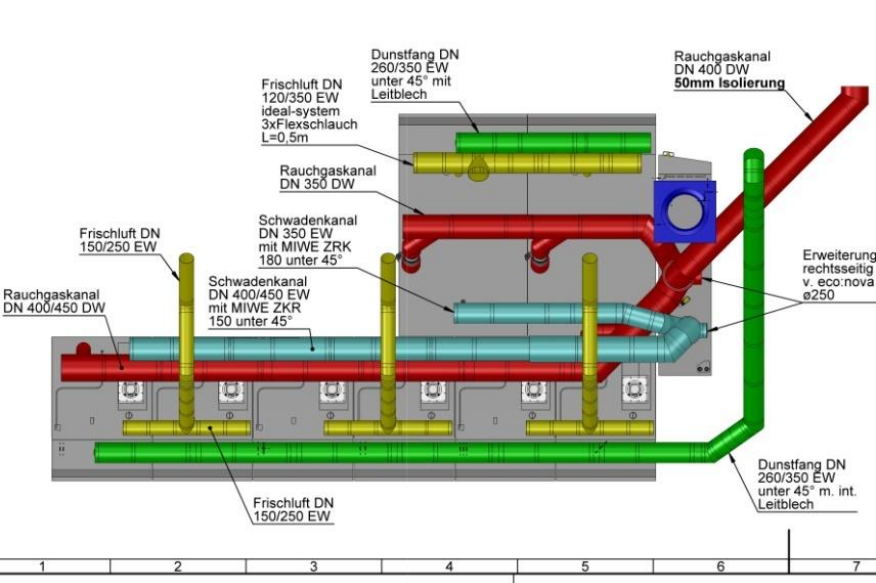


FIRST STEPS



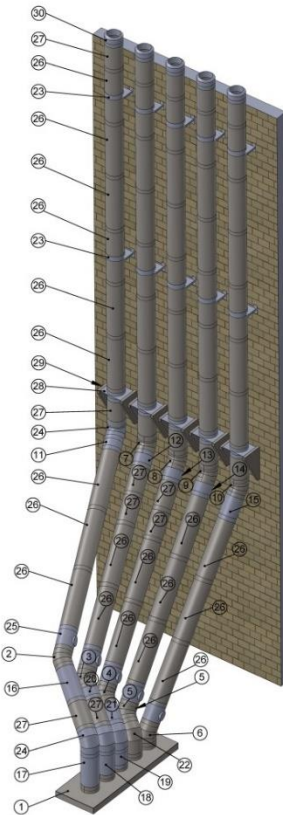


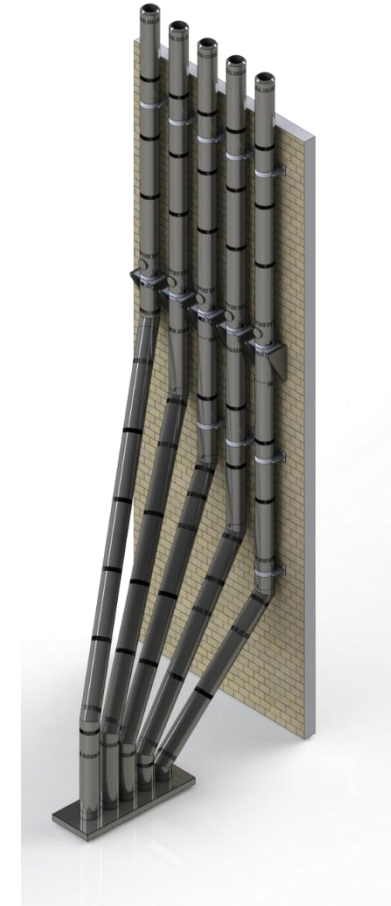
3D TECHNICAL SUPPORT



SPECIFIC DESIGNS

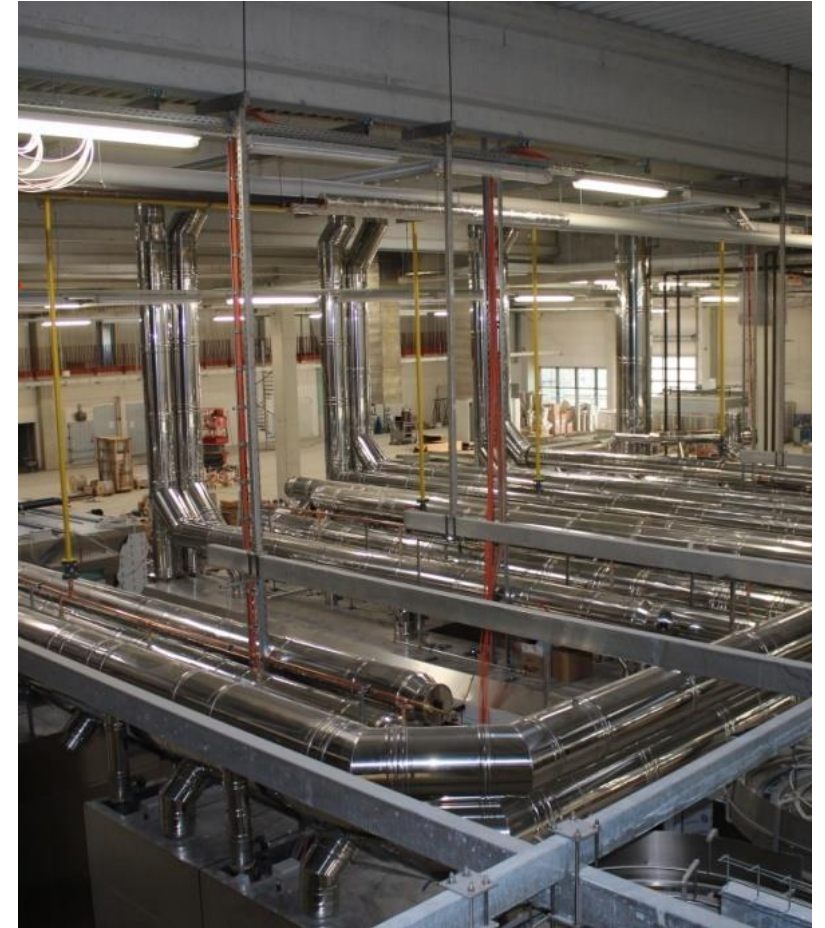
DETAILED BILL OF MATERIALS

				Stücklistentabelle			
				POS-NR.	BENENNUNG	Description_GER	MENGE
				1	Grundplatte		1
				2	DW-FU Sonderwinkel		1
				3	DW-FU Sonderwinkel		1
				4	DW-FU Sonderwinkel		1
				5	DW-FU Sonderwinkel		1
				6	DW-FU Sonderwinkel		1
				7	DW-FU Sonderwinkel		1
				8	DW-FU Sonderwinkel		1
				9	DW-FU Sonderwinkel		1
				10	DW-FU Sonderwinkel		1
				11	DW-FU Passlänge	DW-FU Passlänge 231 mm	1
				12	DW-FU Passlänge	DW-FU Passlänge 255 mm	1
				13	DW-FU Passlänge	DW-FU Passlänge 257 mm	1
				14	DW-FU Passlänge	DW-FU Passlänge 268 mm	1
				15	DW-FU Passlänge	DW-FU Passlänge 413 mm	1
				16	DW-FU Passlänge	DW-FU Passlänge 624 mm	1
				17	DW-FU Passlänge	DW-FU Passlänge 633 mm	1
				18	DW-FU Passlänge	DW-FU Passlänge 466 mm	1
				19	DW-FU Passlänge	DW-FU Passlänge 327 mm	1
				20	DW-FU Passlänge	DW-FU Passlänge 260 mm	1
				21	DW-FU Passlänge	DW-FU Passlänge 390 mm	1
				22	DW-FU Sonderwinkel		1
				23	ZUWA.004C00.0450265	ZU-WA 45 Wandabstandshalter, 50mm	10
				24	DW-FU.6C4D01.0840200	DW-FU 84 Winkel 60°	4
				25	DW-FU.6C4D01.2940200	DW-FU 294 Längenelement mit Revision (Deckel für Öl und Gas)	5
				26	DW-FU.6C4D01.0130200	DW-FU 13 Längenelement 1000mm	43
				27	DW-FU.6C4D01.0140200	DW-FU 14 Längenelement 500mm	16
				28	DW-FU.6C4D01.0070200	DW-KL 07 Grundplatte für Zwischenstütze	5
				29	ZUWA.004C00.0010200	ZU-WA 01 Konsolbleche, verstellbar von 50-150mm	5
				30	DW-FU.6C4D01.0320200	DW-FU 32 Mündungsabschluss	5



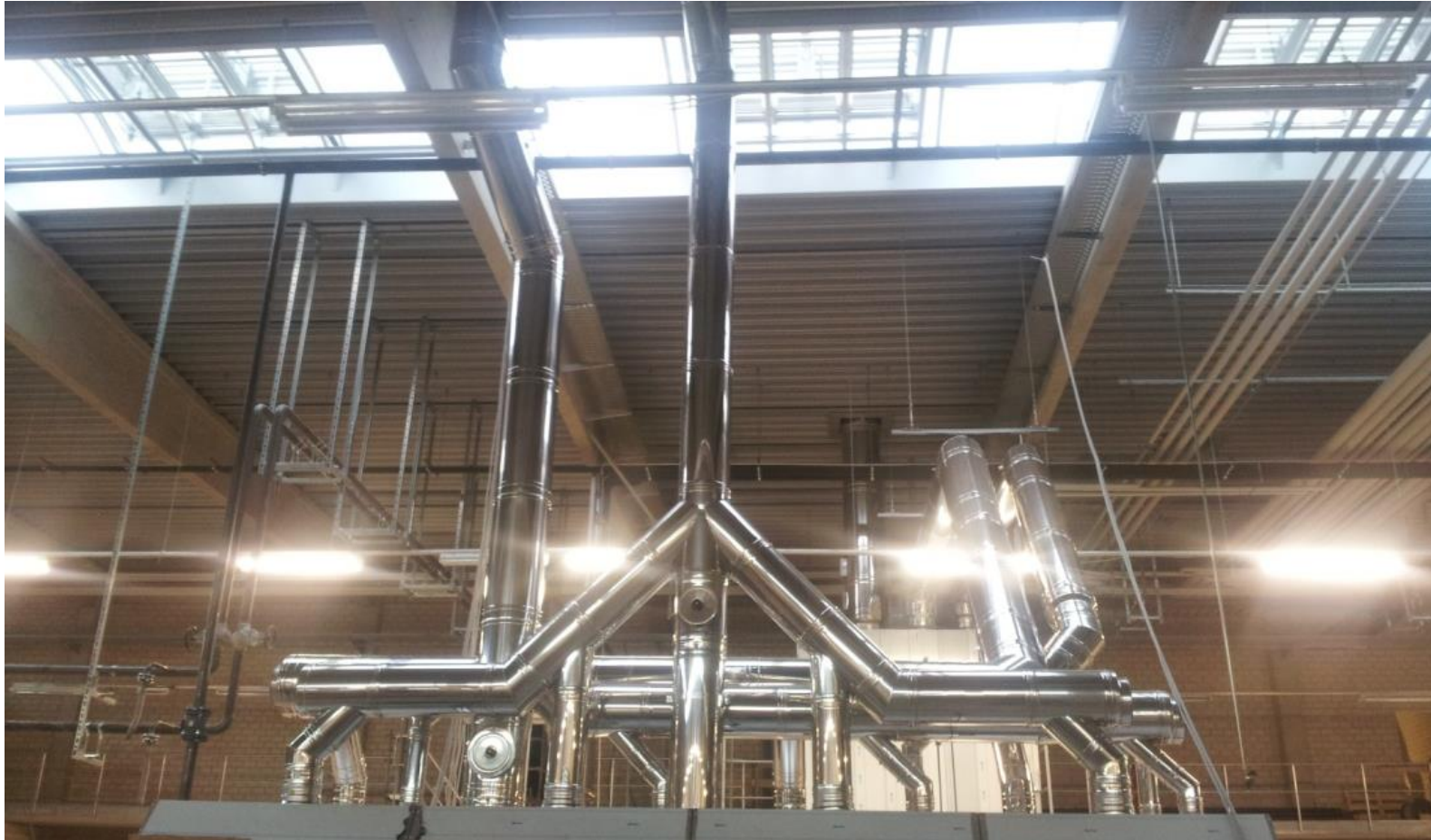
SPECIAL COMPONENTS

TAILOR MADE COMPONENT DESIGN



INSTALLATION TYPES

ROLL IN RACK OVEN



INSTALLATION TYPES

WAGON OVEN



INSTALLATION TYPES

CONTINUOUS TUNNEL OVEN



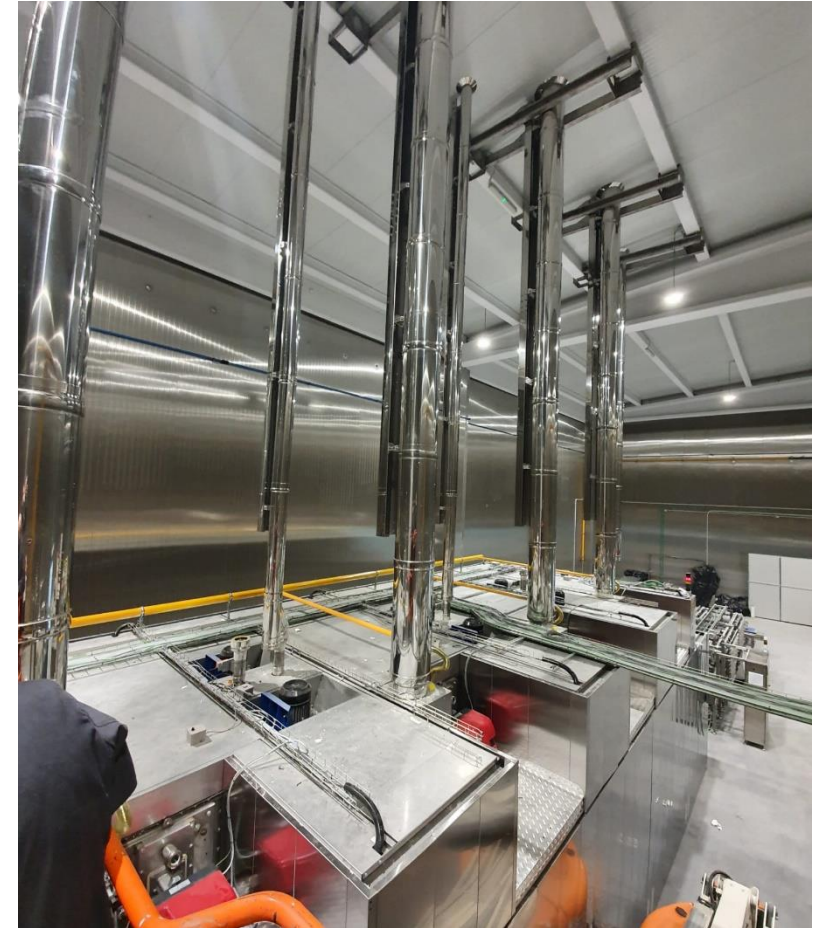
PROJECT REFERENCES

AL SHAYA BAKERY CENTER , DUBAI



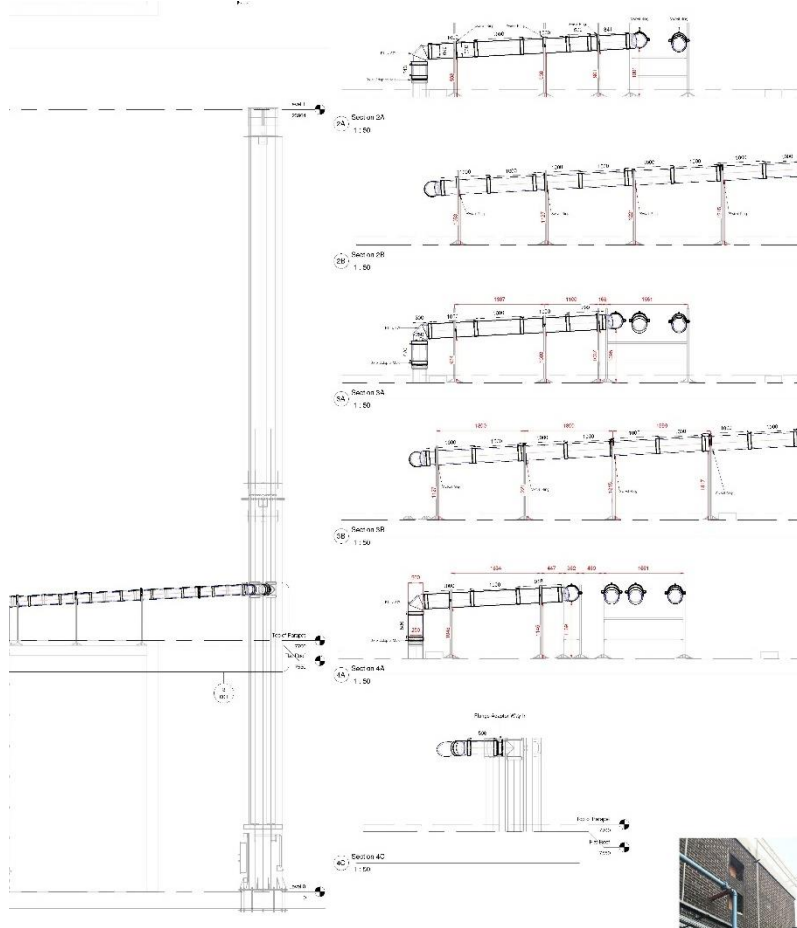
NICOPAN SL

GRANADA, SPAIN



UNITED BISCUITS

LONDON, UK



PANADERIA MASPALOMAS

LAS PALMAS DE GRAN CANARIA, SPAIN



BÄCKEREI GÖRTZ

LUDWIGSHAFEN, GERMANY



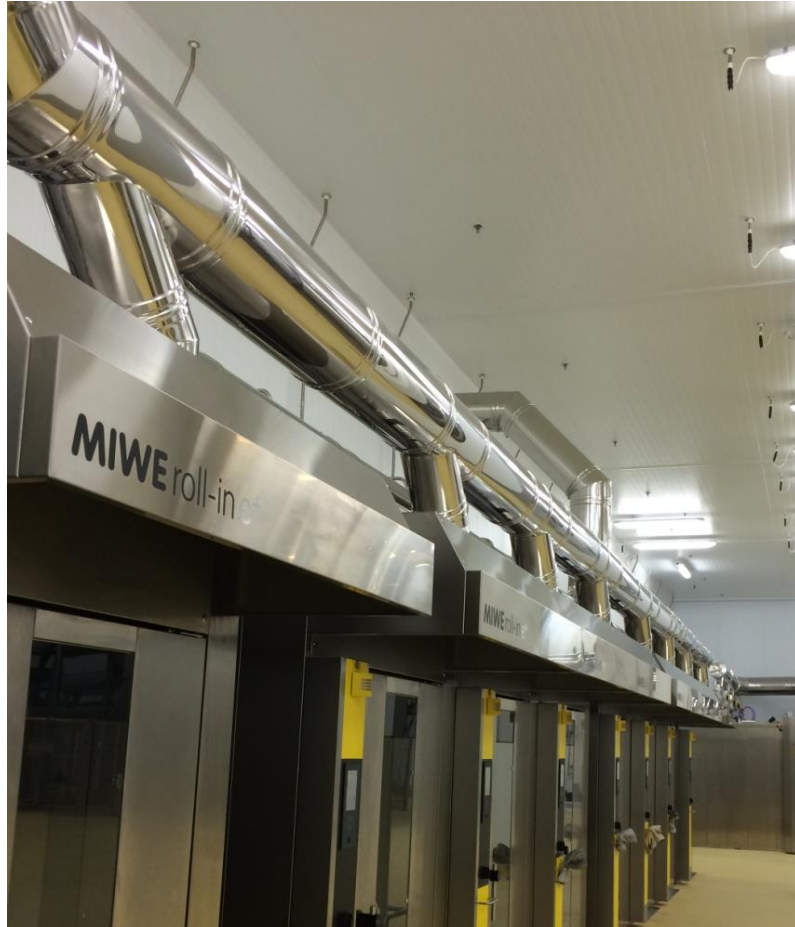
PANADERIA ASTURIAS

GIJÓN, SPAIN



TESCO BAKERY

LONDON, UK



GATTERER

KIENS, SOUTH TIROL, ITALY



BERLY'S

PAMPLONA, NAVARRA, SPAIN



POINTNER & EVERTSBERG

REMSCHIED, GERMANY



BAKERY OSKROBA

KOŁBIEL, POLAND



A close-up photograph of two hands shaking in a firm grip. The hand on the left is wearing a dark blue and white checkered shirt cuff. The hand on the right is wearing a dark blue long-sleeved shirt cuff. The background is a bright, out-of-focus indoor setting.

THANKS!